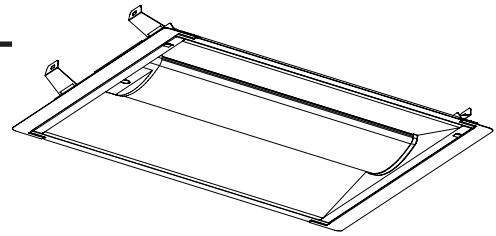


LTR™ (SR/RC) Series

LED Troffer Retrofit Kit - Field Adjustable

Includes: LTR-22 (SR/RC), LTR-24 (SR/RC),
LTR-14 (SR/RC)

aleo™
LED LIGHTING



INSTALLATION INSTRUCTIONS

READ AND FOLLOW ALL SAFETY INSTRUCTIONS

WARNING

FAILURE TO FOLLOW THESE INSTRUCTIONS AND WARNINGS MAY RESULT IN SERIOUS INJURY OR DAMAGE TO PROPERTY

FOR YOUR SAFETY, THOROUGHLY READ THESE INSTRUCTIONS AND WARNINGS IN ITS ENTIRETY PRIOR TO INSTALLING OR SERVICING THIS PRODUCT. THESE INSTRUCTIONS DO NOT ATTEMPT TO COVER ALL INSTALLATION AND MAINTENANCE CIRCUMSTANCES. IF YOU DO NOT UNDERSTAND THESE INSTRUCTIONS OR IF ADDITIONAL INFORMATION IS NEEDED, PLEASE CONTACT ALEO LIGHTING CUSTOMER SERVICE.

WARNING

RISK OF FIRE, ELECTRIC SHOCK, OR PERSONAL INJURY

TO AVOID RISK OF ELECTRICAL SHOCK, TURN OFF POWER BEFORE INSTALLING OR SERVICING.

VERIFY THAT SUPPLY VOLTAGE IS CORRECT BY COMPARING WITH THE INPUT VOLTAGE ON THE LUMINAIRE LABEL

MAKE ALL ELECTRICAL AND GROUND CONNECTIONS IN ACCORDANCE WITH NEC AND ANY APPLICABLE CODE REQUIREMENTS

WARNING

RISK OF PERSONAL INJURY

TO PREVENT WIRING DAMAGE OR ABRASION, DO NOT EXPOSE WIRING TO EDGES OF SHEET METAL OR OTHER SHARP OBJECTS

DO NOT MAKE OR ALTER ANY OPEN HOLES IN ANY OF THE ENCLOSURES WITH WIRING OR ELECTRICAL COMPONENTS DURING INSTALLATION

LTR™ (SR/RC) Series

LED Troffer Retrofit Kit - Field Adjustable

WARNING

RISK OF FIRE OR ELECTRIC SHOCK

THIS PRODUCT MUST BE INSTALLED AND SERVICED BY A PROFESSIONAL ELECTRICIAN IN ACCORDANCE WITH APPLICABLE FEDERAL, STATE, AND LOCAL LAWS, REGULATIONS, AND ELECTRICAL CODE. IF NOT QUALIFIED, DO NOT ATTEMPT INSTALLATION OF THIS PRODUCT. CONTACT A QUALIFIED ELECTRICIAN.

INSTALL THIS KIT ONLY IN THE LUMINAIRES THAT HAVE THE CONSTRUCTION FEATURES AND DIMENSIONS SHOWN IN THE PHOTOGRAPHS AND/OR DRAWINGS AND WHERE THE INPUT RATING OF THE RETROFIT KIT DOES NOT EXCEED THE INPUT RATING OF THE LUMINAIRE.

LUMINAIRE WIRING AND ELECTRICAL PARTS MAY BE DAMAGED WHEN DRILLING FOR INSTALLATION OF LED RETROFIT KIT. CHECK FOR ENCLOSED WIRING AND COMPONENTS.

THE ELECTRICAL RATING OF THESE PRODUCTS ARE 120-277V, THE INSTALLER MUST DETERMINE WHETHER THEY HAVE 120-277V AT THE LUMINAIRE BEFORE INSTALLATION.

SAVE THESE INSTRUCTIONS FOR FUTURE REFERENCE

Suitable for Dry or Damp Location

WARNING

This luminaire is made for permanent installation in ordinary (non-hazardous) locations in accordance with NEC code and all applicable local and federal codes. Do not use in applications with limited ventilation or high ambient temperature enclosures.

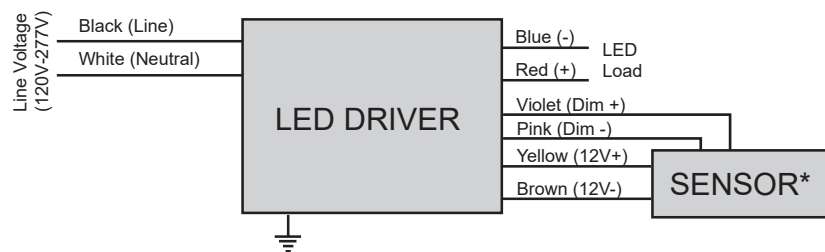
TURN OFF POWER BEFORE INSTALLING

Electrical Connection

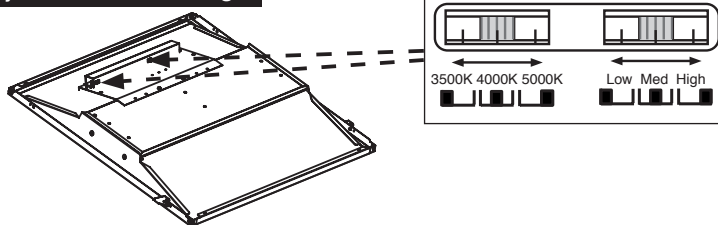
1. Connect BLACK (line) driver lead to voltage supply Line position (HOT).
2. Connect driver WHITE lead to the NEUTRAL supply position.
3. Connect the GREEN ground lead to the supply ground lead.

*Sensor is optional.

Wiring Diagram



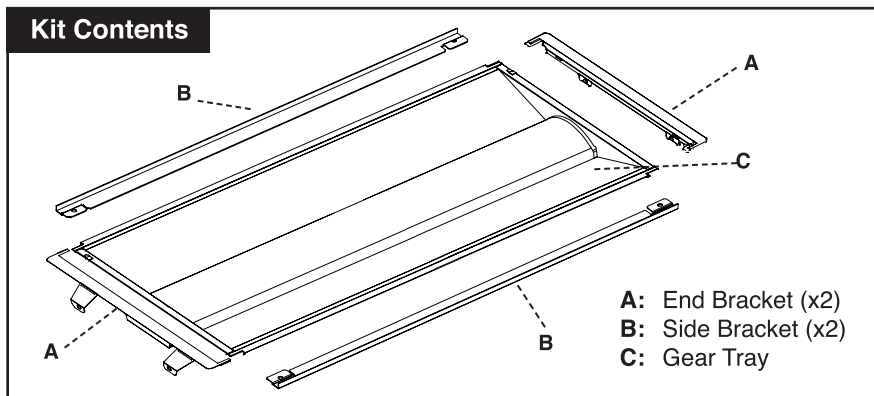
Field-Adjustable CCT & Wattage



LTR™ (SR/RC) Series

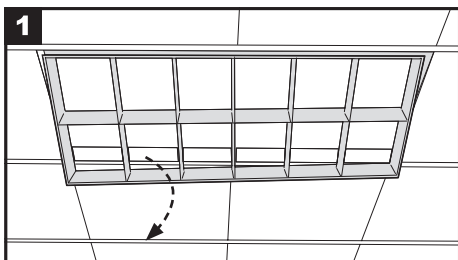
LED Troffer Retrofit Kit - Field Adjustable

TO INSTALL:

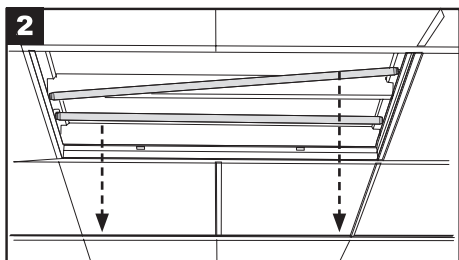


CAUTION: TURN OFF POWER BEFORE INSTALLING

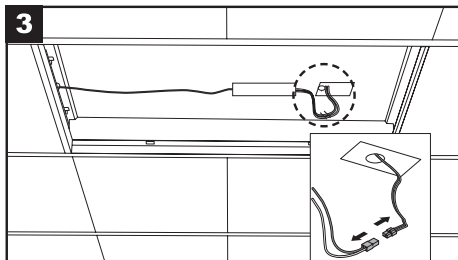
DO NOT TOUCH LED



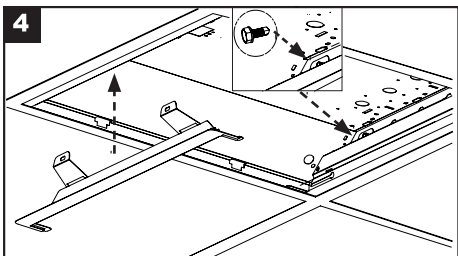
Remove Lens or cover.



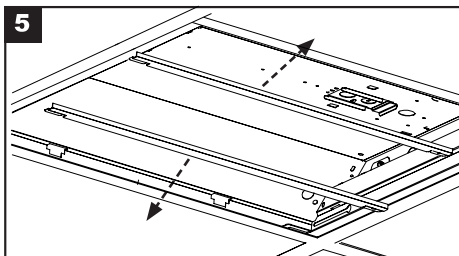
Remove lamps, original ballast cover and sockets/brackets.



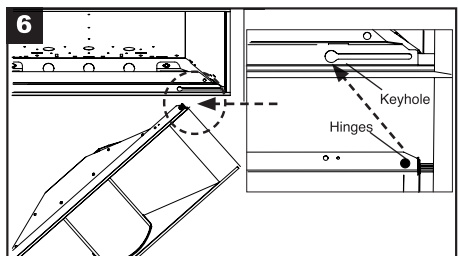
Disconnect AC mains from ballast.



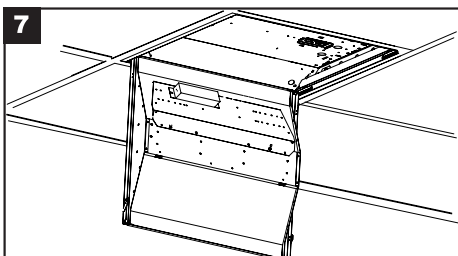
Install End Brackets (A) by sliding brackets between the existing host troffer and T-grid and sliding towards the end of the fixture. Repeat for opposite end.



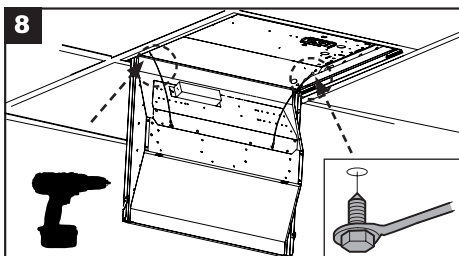
Slide Side Brackets (B) between the existing host troffer and T-grid and slide towards sides of fixture. Repeat for opposite side



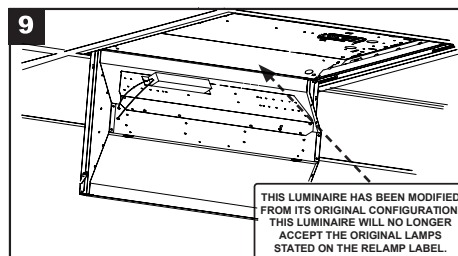
Align and Insert Gear Tray (C) Hinges into End Brackets Keyhole slots.



When both Hinges are securely in Keyhole, slide the Gear Tray (C) towards the side of fixture. Allow Gear Tray (C) to hang securely from End Bracket slots.



Fasten Safety Lanyard cables by fastening self-tapping tek screws to existing host troffer housing.



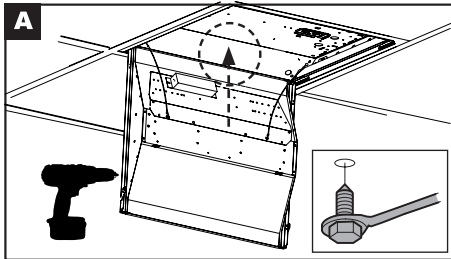
Place Label inside existing host troffer housing.

THIS LUMINAIRE HAS BEEN MODIFIED FROM ITS ORIGINAL CONFIGURATION. THIS LUMINAIRE WILL NO LONGER ACCEPT THE ORIGINAL LAMPS STATED ON THE RELAMP LABEL.

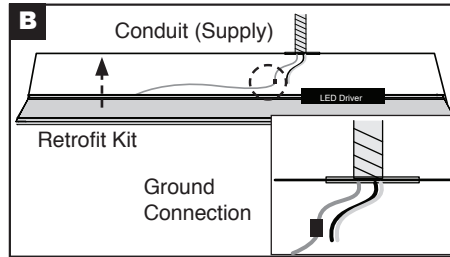
LTR BTEZ™ Series

LED Troffer Retrofit Kit - Field Adjustable

10 Ground Connection

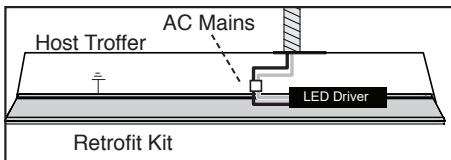


OPTION A:
Securely fasten ground screw lead from Gear Tray (C) to host troffer if host troffer is grounded.

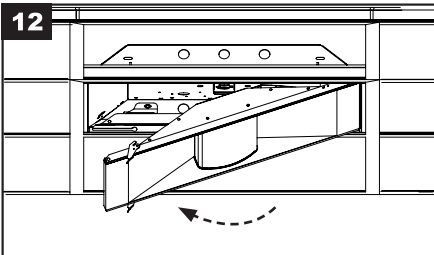


OPTION B:
Connect ground from Gear Tray (C) to supply ground lead from conduit.

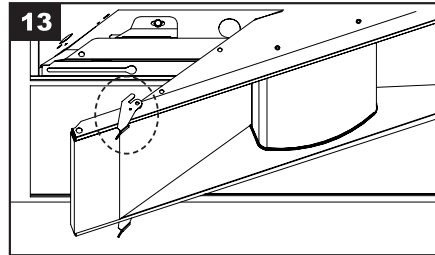
11 Electrical Connection (AC Mains)



Follow instructions and wiring diagram on Page 1 to connect AC mains to Gear Tray input leads. Retrofit kit comes equipped with quick disconnect. Hide wires behind Gear Tray. Ensure leads do not hang out of Gear Tray to avoid electrical wiring being clamped between metal parts.

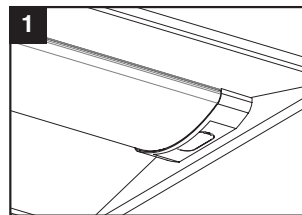


Once all wiring connections are complete, swing Gear Tray upwards. Ensure Gear Tray is properly seated within the brackets and frame.

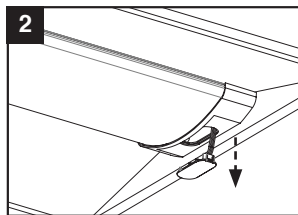


Secure Retrofit Kit by rotating the Locking Latches on each end to lock the Gear Tray in Place.

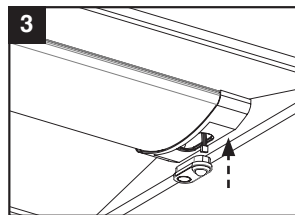
Sensor Installation



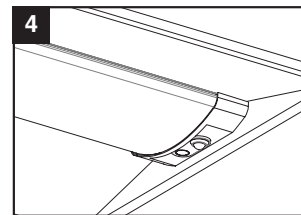
1 Locate the sensor cap.



2 Remove the sensor cap. Sensor wiring harness connector is attached to the cap.



3 Mate the wiring harness connector with the connector on the sensor and push, ensure solid connection. Push and lock the sensor into the fixture hole.



4 Secure the sensor. If necessary, use lock nut.

aleo™
LED LIGHTING

Aleo Lighting, Inc.
www.aleoighting.com
10988 Bloomfield Ave.
Santa Fe Springs, CA 90670
Ph: 877-358-8825