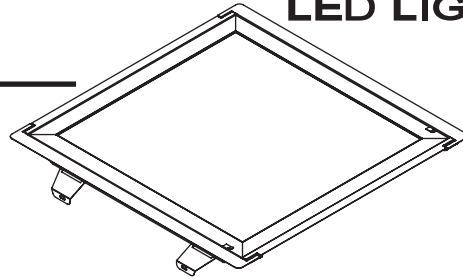


# LPR™ Series

## LED Panel Retrofit Kit - Field Adjustable

Includes: LPR-BL-14, LPR-BL-22, LPR-BL-24

**aleo™**  
LED LIGHTING



---

## INSTALLATION INSTRUCTIONS

READ AND FOLLOW ALL SAFETY INSTRUCTIONS

### **WARNING**

**FAILURE TO FOLLOW THESE INSTRUCTIONS AND WARNINGS MAY RESULT IN SERIOUS INJURY OR DAMAGE TO PROPERTY**

FOR YOUR SAFETY, THOROUGHLY READ THESE INSTRUCTIONS AND WARNINGS IN ITS ENTIRETY PRIOR TO INSTALLING OR SERVICING THIS PRODUCT. THESE INSTRUCTIONS DO NOT ATTEMPT TO COVER ALL INSTALLATION AND MAINTENANCE CIRCUMSTANCES. IF YOU DO NOT UNDERSTAND THESE INSTRUCTIONS OR IF ADDITIONAL INFORMATION IS NEEDED, PLEASE CONTACT ALEO LIGHTING CUSTOMER SERVICE.

### **WARNING**

**RISK OF FIRE, ELECTRIC SHOCK, OR PERSONAL INJURY**

TO AVOID RISK OF ELECTRICAL SHOCK, TURN OFF POWER BEFORE INSTALLING OR SERVICING.

VERIFY THAT SUPPLY VOLTAGE IS CORRECT BY COMPARING WITH THE INPUT VOLTAGE ON THE LUMINAIRE LABEL

MAKE ALL ELECTRICAL AND GROUND CONNECTIONS IN ACCORDANCE WITH NEC AND ANY APPLICABLE CODE REQUIREMENTS

### **WARNING**

**RISK OF PERSONAL INJURY**

TO PREVENT WIRING DAMAGE OR ABRASION, DO NOT EXPOSE WIRING TO EDGES OF SHEET METAL OR OTHER SHARP OBJECTS

DO NOT MAKE OR ALTER ANY OPEN HOLES IN ANY OF THE ENCLOSURES WITH WIRING OR ELECTRICAL COMPONENTS DURING INSTALLATION

**WARNING**

**RISK OF FIRE OR ELECTRIC SHOCK**

**THIS PRODUCT MUST BE INSTALLED AND SERVICED BY A PROFESSIONAL ELECTRICIAN IN ACCORDANCE WITH APPLICABLE FEDERAL, STATE, AND LOCAL LAWS, REGULATIONS, AND ELECTRICAL CODE. IF NOT QUALIFIED, DO NOT ATTEMPT INSTALLATION OF THIS PRODUCT. CONTACT A QUALIFIED ELECTRICIAN.**

**INSTALL THIS KIT ONLY IN THE LUMINAIRES THAT HAVE THE CONSTRUCTION FEATURES AND DIMENSIONS SHOWN IN THE PHOTOGRAPHS AND/OR DRAWINGS AND WHERE THE INPUT RATING OF THE RETROFIT KIT DOES NOT EXCEED THE INPUT RATING OF THE LUMINAIRE.**

**LUMINAIRE WIRING AND ELECTRICAL PARTS MAY BE DAMAGED WHEN DRILLING FOR INSTALLATION OF LED RETROFIT KIT. CHECK FOR ENCLOSED WIRING AND COMPONENTS.**

**THE ELECTRICAL RATING OF THESE PRODUCTS ARE 120-277V, THE INSTALLER MUST DETERMINE WHETHER THEY HAVE 120-277V AT THE LUMINAIRE BEFORE INSTALLATION.**

**SAVE THESE INSTRUCTIONS FOR FUTURE REFERENCE**

Suitable for Dry or Damp Location

**WARNING**

This luminaire is made for permanent installation in ordinary (non-hazardous) locations in accordance with NEC code and all applicable local and federal codes. Do not use in applications with limited ventilation or high ambient temperature enclosures.

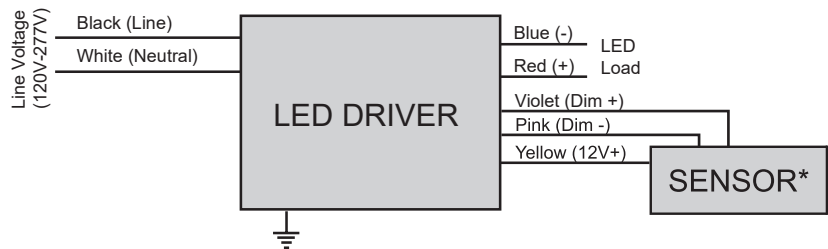
**TURN OFF POWER BEFORE INSTALLING**

**Electrical Connection**

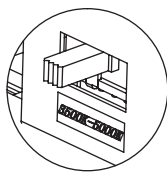
1. Connect BLACK (line) driver lead to voltage supply Line position (HOT).
2. Connect driver WHITE lead to the NEUTRAL supply position.
3. Connect the GREEN ground lead to the supply ground lead.

\*Sensor is optional.

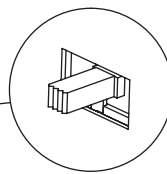
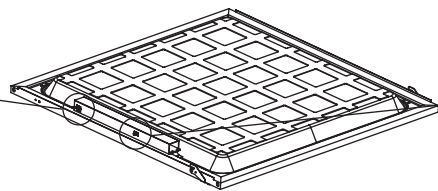
**Wiring Diagram**



**Field-Adjustable Wattage & CCT**



CCT Switch



Wattage Switch

### TO INSTALL:

**Kit Contents**

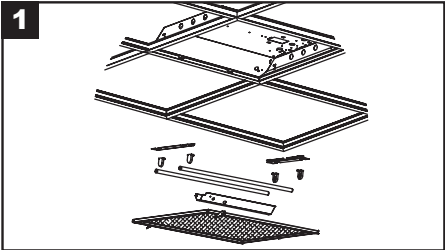
**A:** End Plates (x2)  
**B:** Side Plates (x2)  
**C:** Door Ass'y Body (x1)  
**D:** Self-tapping Screws (x4)

**Tools Required**

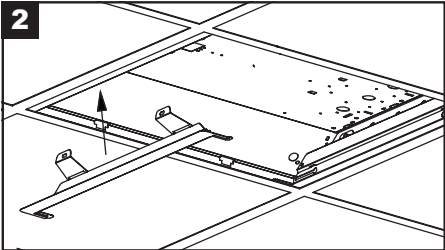
- Drill
- Pliers
- Cutters
- Gloves
- Screw Driver (optional)

**CAUTION: TURN OFF POWER BEFORE INSTALLING**

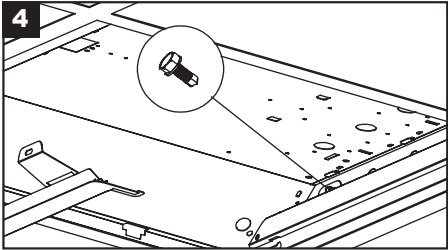
**DO NOT TOUCH LED**



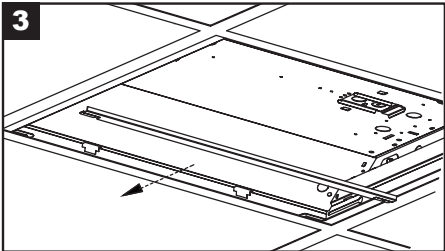
1 Remove existing hardware (lens/lens frame, parabolic louver, reflectors/ballast covers, brackets, lamps/lamp holders). Leave supply and grounding leads.



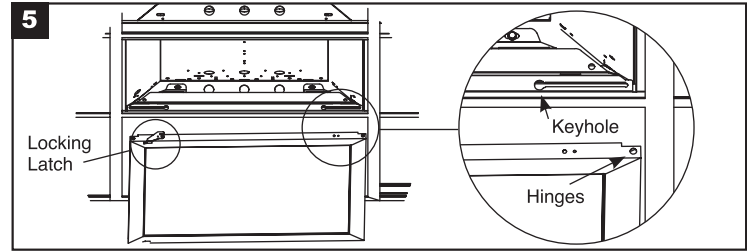
2 Install LED panel end plates on each end of the existing fixture by gently lifting it and placing them between the fixture and T-grid.



4 Secure the LED panel plates to the existing fixture using the provided #8x1/2" self-drilling screws.



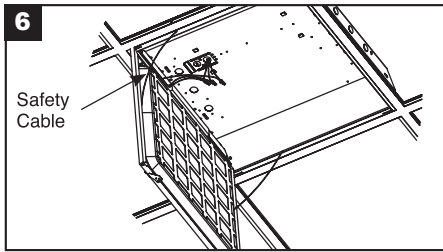
3 If you are not pleased with the gap between the fixture and T-grid, you may install LED panel side plates between the fixture and T-grid. There are two tabs to allow for placing the side plates into the slot of the end plates.



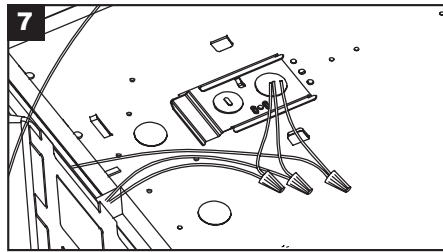
5 Place the door assembly body onto the keyholes of end plates, and then slide it horizontally to the end of slots.

Continued on Page 4

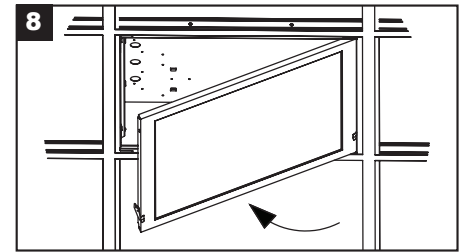
### TO INSTALL:



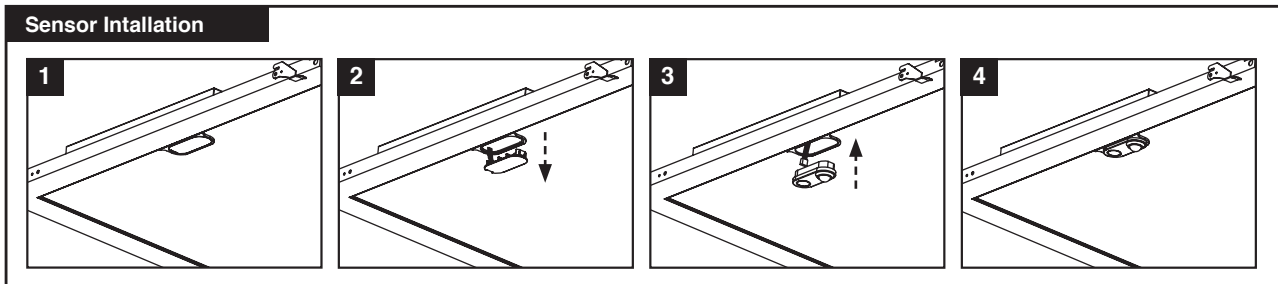
Hook the safety cables into the holes positioned in the end brackets.



Connect the wire leads of the troffer kits to the main power leads. Follow instructions and wiring diagram on Page 1 to connect AC mains to Gear Tray input leads. Retrofit kit comes equipped with quick disconnect. Hide wires behind Gear Tray. Ensure leads do not hang out of Gear Tray to avoid electrical wiring being clamped between metal parts.



Secure the door assembly body by locking the latches riveted on each end of the assembled door frame.



1 Locate the sensor cap.

2 Remove the sensor cap. Sensor wiring harness connector is attached to the cap.

3 Mate the wiring harness connector with the connector on the sensor and push to ensure a solid connection. Push and lock the sensor into the fixture hole.

4 Secure the sensor.

**aleo™**  
LED LIGHTING

Aleo Lighting, Inc.

www.aleoighting.com

10988 Bloomfield Ave.

Santa Fe Springs, CA 90670

Ph: 877-358-8825