

Project	
Notes	
Type	Date
Cat. No.	

FL™ Series

Mini Flood Light



FL Series

15W, 30W, 50W

DESCRIPTION

The FL Series combines energy-efficiency, advanced optical control, and modern slim profile aesthetics to deliver enhanced performance to general outdoor lighting applications. Rugged die-cast housing provides advanced thermal management for long life and weather-proof compartment to withstand outdoor environments. Comes standard with rotatable knuckle-mount arm for versatility and convenience.

APPLICATIONS

Excellent for general outdoor lighting applications needing low wattage LED and slim profile form factor. Common applications: multi-family common area, walkways, doorways, retail shopping centers, recreational spaces.

Specification Features



Construction

Rugged, die-cast housing with advanced thermal management system ensures reliability and durability. Weather-proof, gasketed driver compartment protects electronics against environmental elements. Small form factor and slim-profile make for versatility. IP65 Rated.

Optical System

Precision-formed optical lens system improves safety and security by delivering high-efficiency illumination. NEMA 7X7 beam spread

Certification

UL Listed. Wet Location. DLC Premium.

Warranty

7-year Limited Warranty. See warranty documentation for more information.

Electrical

Luminaire utilizes high-efficiency LED arrays maintained at cool temperatures for long life and reliability. 120V-277V input. Flicker-free. Non-dimming.

Installation / Mounting

Flood light comes standard with knuckle-mount arm that is rotatable. 1/2 trade size threaded chase nipple on arm mounts to electrical boxes. Available mounting accessories: yoke and trunion mount (not available for 15W).

Controls / Dimming

Non-dimming.

Rated Life 50,000 hours
 Limited Warranty 7-years
 Efficacy Over 110 lm/W
 Knuckle-Mount

Ordering Information

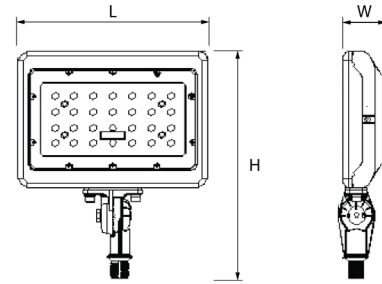
Example: FL-30/50K

FL	30	50K	[Blank]	Options
Series	Nominal Wattage	Color Temp	Mounting*	Designation
FL	15 15W	40K 4000K	KNM - Knuckle-Mount	BAA
Mini Flood Light	30 30W	50K 5000K	* Other mounting options ordered separately as accessories (not installed)	Buy American Act Compliant
	50 50W			BABAA
				Build America, Buy America Act Compliant

Specifications and Dimensions subject to change without notice.

Performance Summary

Input Voltage	120V-277V
Input Frequency	50/60 Hz
Rated Wattage	See Performance Table
Delivered Lumens	See Performance Table
Efficacy	> 110 LPW (typ.)
CRI	80+
Available CCT ¹	4000K, 5000K
Rated Life	50,000 hours
L90	50,000 hours
Power Factor	> 0.9
THD	< 15%
Dimming	Non-Dimming, Fixed Output
Beam Angle	110°
Field Angle / Beam Spread (10% luminous intensity)	150°
NEMA Type	NEMA 7X7
IP Rating	IP65
Operating Temp.	-20°C to 50°C



	L	H	W
FL-15-KNM	3.93" (100mm)	5.35" (136mm)	1.49" (38mm)
FL-30-KNM	7.12" (181mm)	9.17" (233mm)	1.92" (49mm)
FL-50-KNM	8.5" (216mm)	10.15" (258mm)	2.12" (54mm)

	L	H	W
FL-15-YOK	3.93" (100mm)	4.64" (118)	1.49" (38mm)
FL-30-YOK	7.12" (181mm)	7.44" (189mm)	1.69" (43mm)
FL-50-YOK	8.5" (216mm)	8.46" (215mm)	1.88" (48mm)

	L	H	W
FL-15-AUB	4.76" (121mm)	4.68" (119mm)	1.49" (38mm)
FL-30-AUB	7.28" (185mm)	7" (178mm)	1.69" (43mm)
FL-50-AUB	8.54" (217mm)	7.91" (201mm)	1.88" (48mm)

Performance Data

Catalog No.	Rated Wattage (W)	Tested Wattage (W)	4000K		5000K	
			Delivered Lumens (lm)	Efficacy (lm/W)	Delivered Lumens (lm)	Efficacy (lm/W)
FL-15/xxK	14.45	14.55	1603	111.05	1624.3	112.76
FL-30/xxK	29.77	29.79	3427	115.87	3432	116.02
FL-50/xxK	49.58	49.58	5778	117.49	5793	117.8

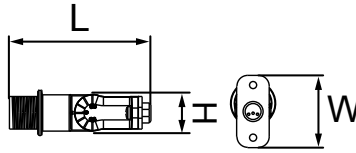
DLC QPL Data

QPL Model No.	Product ID	Technical Req.	Classification	Primary Use
FL-15/40K	PL110Y5EQ3HI	4.4	Premium	Architectural Flood and Spot Luminaires
FL-15/50K	PLBSIP11I7EQ	4.4	Premium	Architectural Flood and Spot Luminaires
FL-30/40K	PLX39CKJ0F5K	4.4	Premium	Architectural Flood and Spot Luminaires
FL-30/50K	PLPKG054V0XU	4.4	Premium	Architectural Flood and Spot Luminaires
FL-50/40K	PLH9Y6ZDS1WR	4.4	Premium	Architectural Flood and Spot Luminaires
FL-50/50K	PLA1FG3TKU4K	4.4	Premium	Architectural Flood and Spot Luminaires



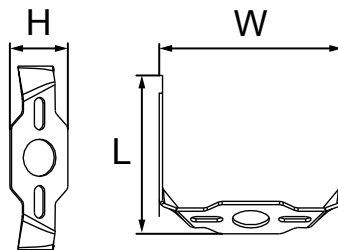
Mounting Information

Knuckle-Mount



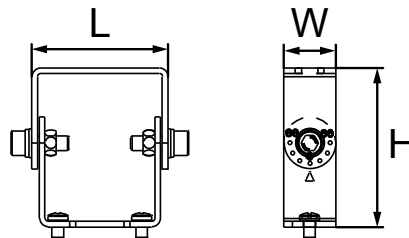
Catalog No.	Description	L	W	H
KNM-LRG	For FL - 30W, 50W (Comes Standard)	4.04" (102.5mm)	2.64" (67mm)	1.65" (42mm)

Yoke



Catalog No.	Description	L	W	H
FL-YOK-MD	For FL-30W (Sold Separately)	4.94" (125.5mm)	6.61" (168mm)	1.3" (33.1mm)
FL-YOK-LG	For FL-50W (Sold Separately)	5.33" (135.5mm)	7.87" (200mm)	1.3" (33.1mm)

Trunion



Catalog No.	Description	L	W	H
FL-AUB-LG	For FL - 30W, 50W (Sold Separately)	3.34" (85mm)	.98" (25mm)	2.32" (59mm)

Specifications and Dimensions subject to change without notice.

BAA and BABAA Compliant

**BAA - Buy America Act Compliant**

Complies and Qualifies for projects requiring Buy America Act (BAA) compliant product

BABAA - Build America, Buy America Compliant

Complies and Qualifies for projects requiring Build America, Buy America Act (BABAA) compliant product

*Note: BAA and BABAA product will require lead times approximately ranging from 12-18 weeks. Contact your Aleo representative for more information